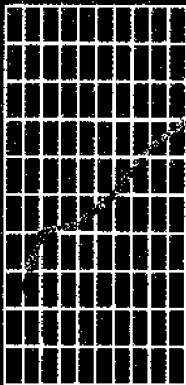


November 1997

EMBARGO: 11:30 AM (CANBERRA TIME) THURS 18 DEC 1997

Monthly Summary of Statistics

Victoria



NOTES

FORTHCOMING ISSUES

<i>ISSUE</i>	<i>RELEASE DATE</i>
December 1997	20 January 1998
January 1998	19 February 1998
February 1998	19 March 1998

ABOUT THIS PUBLICATION

The aim of this publication is to provide users with a range of the latest statistics available at the end of each month of issue. Consequently, the dates and periods shown are not always the same for each table, but are in each case the latest figures available at that time.

SEASONAL ADJUSTMENT

Seasonal adjustment is a means of removing the estimated effects of normal seasonal variations from economic time series so that the effects of other influences are obvious. Seasonal variations are the systematic (though not necessarily regular) intra-year movements of economic time series. These are often the result of non-economic phenomena, such as climatic changes and regular religious festivals e.g. Christmas and Easter.

TREND ESTIMATE

Smoothing seasonally adjusted series produces a measure of trend by removing the impact of the irregular component of the series. The trend estimates are derived by applying a 13-term Henderson weighted moving average to the respective seasonally adjusted series. Readers are reminded that trend estimates are subject to revision as subsequent months' data become available.

SYMBOLS AND OTHER USAGES

n.a.	not available
n.e.c.	not elsewhere classified
n.p.	not available for publication but included in totals where applicable
n.y.a.	not yet available
p	preliminary — figure or series subject to revision
r	figure or series revised since previous issue
*	estimate has a relative standard error greater than 25% and is therefore subject to sampling variability too high for most practical uses
..	not applicable
—	nil or rounded to zero

INQUIRIES

For information about other ABS statistics and services, please refer to the back of this publication.

For further information about these statistics, contact Information Services on Melbourne 03 9615 7000.

Stuart Jackson
Regional Director

CONTENTS

Page

COMMENTARY

Notes	2
Selected features	4, 5

TABLES

Demography

1	Estimated resident population	6
2	Births, deaths, marriages and divorces	6

Labour

3	Labour force status of the civilian population aged 15 years and over	7
4	Employed persons, by industry	8
5	Job vacancies	9
6	Industrial disputes causing stoppage of work	9

Wages and prices

7	Average weekly earnings of employees (original series)	10
8	Consumer Price Index—Melbourne	11
9	Price Index of Materials Used in Building—Melbourne	11

Meat production

10	Livestock slaughterings	12
11	Meat production	12

Building

12	Building approvals—Melbourne and Victoria	13
13	New houses and other residential buildings, number of dwelling units	14
14	Value of building	15

Finance

15	Statement of Budget Sector transactions	16
16	Private new capital expenditure, by selected industries and type of asset	17
17	Commercial finance commitments	17
18	Secured housing finance commitments	18

Retail

19	Retail turnover, by industry (excl. motor vehicles, parts, petrol, etc.)	18
----	--	----

Trade

20	Exports and imports, by sections of the Australian Export and Import Classifications	19
21	Overseas trade, major trading partners	20
22	Value of overseas trade—Victoria and Australia	21

Tourism

23	Tourist accommodation—Melbourne and Victoria	21
----	--	----

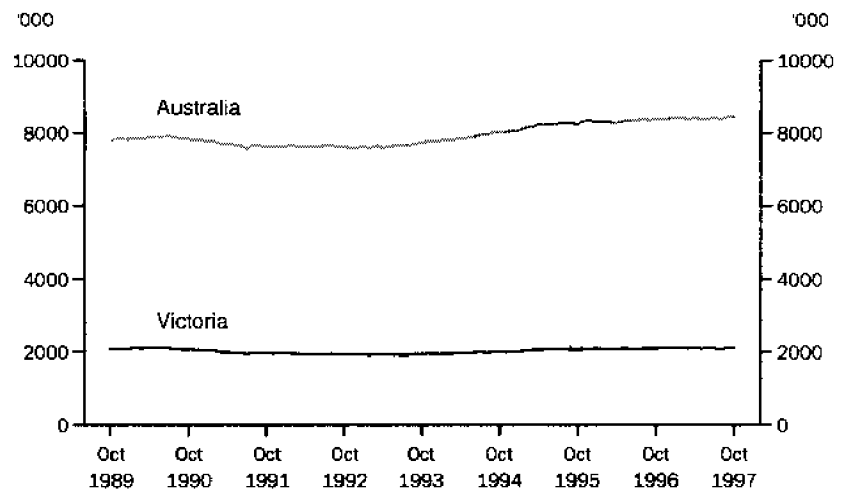
ADDITIONAL INFORMATION

List of references	22
--------------------------	----

SELECTED FEATURES

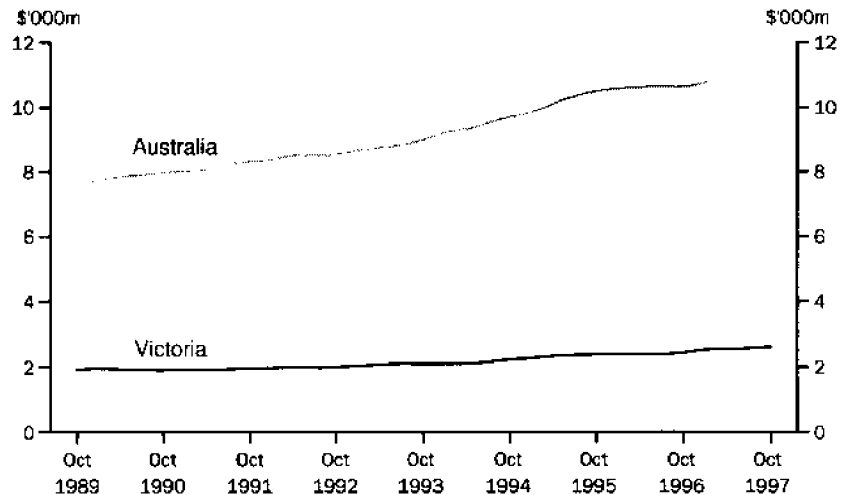
EMPLOYED PERSONS

The number of employed persons, in seasonally adjusted terms, for Victoria in October 1997 was 2.1 million. This figure represented an increase for the second consecutive month. For Australia, the number of employed persons, in seasonally adjusted terms, in October 1997 was 8.5 million, a slight decrease from the previous month. The number of employed persons in Victoria accounted for 24.9% of the Australian total.



RETAIL TURNOVER

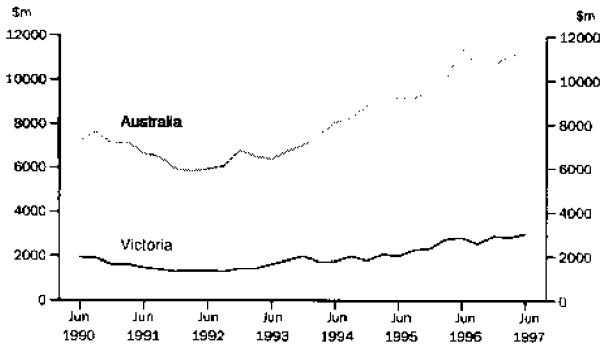
The trend estimate of retail turnover for Victoria in October 1997 was \$2,603.1 million. This figure continued the monthly increase. For Australia, the trend estimate of retail turnover in October 1997 was \$11,210.5 million, representing a continued increase since October 1996. The trend estimate of retail turnover for Victoria accounted for 23.2% of the Australian total.



SELECTED FEATURES *continued*

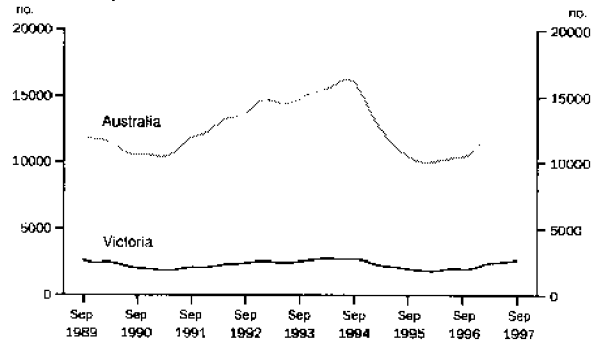
PRIVATE NEW CAPITAL EXPENDITURE

Seasonally adjusted, quarterly



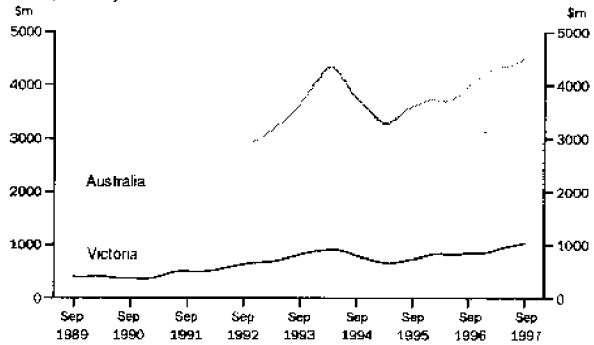
NEW DWELLING UNITS APPROVED

Trend, monthly



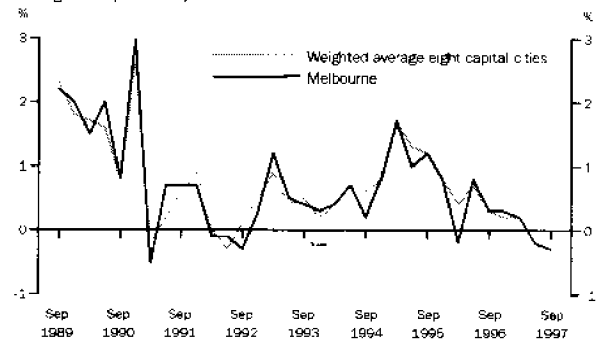
TOTAL VALUE OF SECURED HOUSING FINANCE COMMITMENTS TO INDIVIDUALS

Trend, monthly



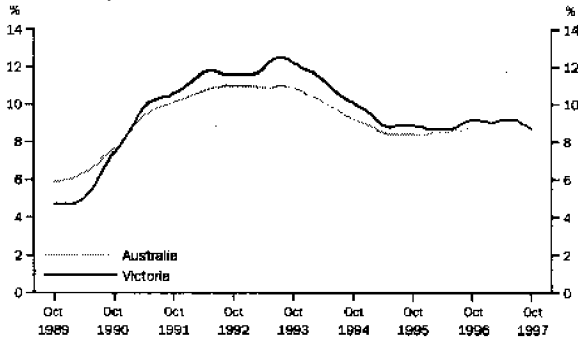
CONSUMER PRICE INDEX

Change from previous quarter



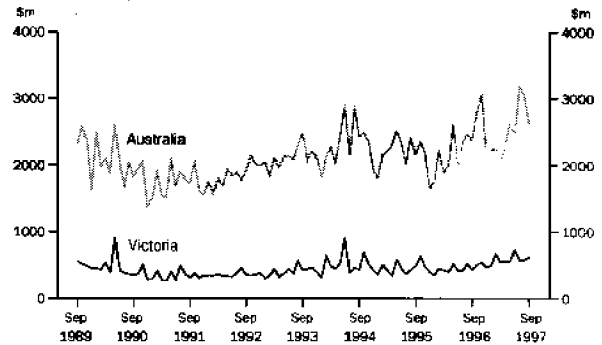
UNEMPLOYMENT RATE

Trend, monthly



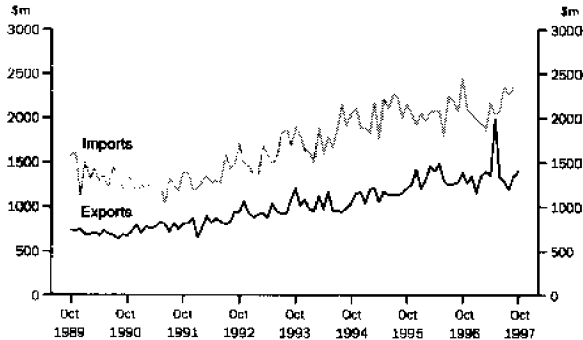
VALUE OF ALL BUILDINGS APPROVED

Original, monthly



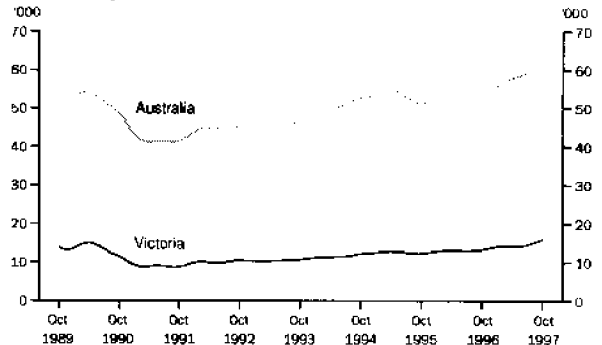
MERCHANDISE IMPORTS AND EXPORTS, VICTORIA

Original, monthly



NEW MOTOR VEHICLE REGISTRATIONS

Trend, monthly



1

ESTIMATED RESIDENT POPULATION

Period	AT END OF PERIOD.....			INCREASE DURING PERIOD..		MEAN ESTIMATED RESIDENT POPULATION FOR YEAR ENDED.....		Melbourne Statistical Division at 30 Jun(a)
	Males	Females	Persons	Natural	Total	30 Jun	31 Dec	
	'000	'000	'000	'000	'000	'000	'000	
1993-94	2 219.5	2 267.2	4 486.7	32.5	11.3	4 479.1	4 488.6	3 196.7
1994-95	2 232.7	2 283.5	4 516.1	31.3	25.6	4 501.2	4 517.6	3 217.4
1995-96 p	2 252.9	2 307.9	4 560.8	28.1	39.9	4 539.1	4 561.5	3 283.0
1996								
March qtr p	2 249.0	2 303.2	4 552.2	7.4	12.4
June qtr p	2 252.9	2 307.9	4 560.8	7.1	7.7
September qtr p	2 258.4	2 313.6	4 571.9	6.3	11.0
December qtr p	2 262.9	2 318.7	4 581.6	7.1	9.7
1997								
March qtr p	2 270.1	2 325.5	4 595.7	7.6	14.1

(a) Based on the 1996 Statistical Local Area boundaries. Years 1992 to 1995 are yet to be revised based on the 1996 Census results and are therefore excluded from this table.

2

BIRTHS, DEATHS, MARRIAGES AND DIVORCES

Period	NUMBER OF REGISTRATIONS.....				ANNUAL RATE PER 1,000 OF MEAN ESTIMATED RESIDENT POPULATION....				
	Births	Deaths (including infant deaths)	Marriages	Divorces	Births	Deaths	Marriages	Divorces	Infant deaths per 1 000 live births
		Deaths							
1993-94	64 540	31 778	27 316	10 914	14.44	7.11	6.11	2.44	5.35
1994-95	63 960	32 291	26 831	11 602	14.26	7.20	5.98	2.59	5.19
1995-96	60 954	32 494	26 117	12 002	13.48	7.19	5.78	2.65	5.28
1996									
March qtr	15 244	7 725	8 372	2 672
June qtr	15 167	7 965	6 139	2 891
September qtr p	15 615	9 189	3 841	3 530
December qtr p	15 055	7 838	7 729	3 398
Year - 1996	61 081	32 717	26 081	12 491	13.33	7.14	5.69	2.73	5.09
1997									
March qtr	15 084	7 423	8 102	2 809

LABOUR FORCE STATUS OF THE CIVILIAN POPULATION AGED 15 YEARS AND OVER

Month	EMPLOYED.....		UNEMPLOYED LOOKING FOR WORK.....			Labour force	Not in labour force	Civilian population 15 years and over	Unemploy- ment rate	Partici- pation rate
	Full-time	Total	Full-time	Part-time	Total					
	'000	'000	'000	'000	'000					
MALES										
1996										
August	1 045.0	1 182.2	98.5	13.5	112.0	1 294.2	467.7	1 761.9	8.7	73.5
September	1 040.3	1 185.8	107.8	15.6	123.3	1 309.1	454.8	1 763.9	9.4	74.2
October	1 047.5	1 185.9	101.5	15.7	117.2	1 303.1	462.5	1 765.5	9.0	73.8
November	1 049.0	1 192.4	104.1	12.3	116.4	1 308.8	458.4	1 767.2	8.9	74.1
December	1 059.4	1 201.7	103.4	16.4	119.8	1 321.5	447.4	1 768.8	9.1	74.7
1997										
January	1 050.9	1 184.8	108.4	16.6	125.0	1 309.8	460.3	1 770.2	9.5	74.0
February	1 049.8	1 180.9	113.2	19.2	132.4	1 313.3	458.2	1 771.5	10.1	74.1
March	1 037.5	1 184.1	104.8	20.0	124.8	1 308.9	463.9	1 772.9	9.5	73.8
April	1 044.3	1 186.3	97.1	19.3	116.5	1 302.8	472.0	1 774.8	8.9	73.4
May	1 040.9	1 183.3	101.9	13.8	115.7	1 299.0	477.7	1 776.7	8.9	73.1
June	1 033.1	1 182.8	104.0	15.8	119.8	1 302.6	476.0	1 778.6	9.2	73.2
July	1 039.7	1 185.2	98.3	14.0	112.3	1 297.5	483.0	1 780.6	8.7	72.9
August	1 022.4	1 168.7	100.2	15.2	115.4	1 284.0	498.5	1 782.5	9.0	72.0
September	1 037.0	1 189.1	100.8	22.6	123.5	1 312.6	471.9	1 784.5	9.4	73.6
October	1 043.0	1 195.9	85.9	15.2	101.1	1 297.0	489.5	1 786.5	7.8	72.6
FEMALES										
1996										
August	507.7	893.2	60.8	25.3	86.1	979.3	859.3	1 838.6	8.8	53.3
September	517.9	914.3	62.5	29.0	91.5	1 005.7	835.2	1 841.0	9.1	54.6
October	514.1	906.1	59.8	27.7	87.5	993.6	849.4	1 842.9	8.8	53.9
November	515.4	913.3	62.9	24.9	87.8	1 001.1	843.8	1 844.9	8.8	54.3
December	520.2	918.1	63.6	32.0	95.6	1 013.7	833.1	1 846.8	9.4	54.9
1997										
January	511.9	888.2	64.1	24.1	88.2	976.4	871.9	1 848.3	9.0	52.8
February	511.1	903.0	72.0	29.6	101.7	1 004.7	845.0	1 849.7	10.1	54.3
March	501.2	904.3	63.3	32.5	95.8	1 000.1	851.0	1 851.1	9.6	54.0
April	503.8	914.2	63.0	30.4	93.4	1 007.7	845.4	1 853.1	9.3	54.4
May	503.7	907.5	61.9	30.8	92.7	1 000.2	854.9	1 855.1	9.3	53.9
June	512.1	921.1	60.6	27.0	87.6	1 008.8	848.3	1 857.1	8.7	54.3
July	523.1	917.8	56.3	25.7	82.0	999.8	859.3	1 859.0	8.2	53.8
August	498.5	891.5	57.8	29.0	86.7	978.2	882.7	1 861.0	8.9	52.6
September	520.4	932.9	59.1	29.0	88.1	1 021.0	841.9	1 862.9	8.6	54.8
October	511.9	916.1	55.4	27.3	82.8	998.8	866.0	1 864.8	8.3	53.6
PERSONS										
1996										
August	1 552.7	2 075.4	159.3	38.8	198.2	2 273.5	1 326.9	3 600.4	8.7	63.1
September	1 558.1	2 100.0	170.3	44.5	214.8	2 314.8	1 290.0	3 604.9	9.3	64.2
October	1 561.6	2 091.9	161.3	43.4	204.7	2 296.6	1 311.8	3 608.5	8.9	63.6
November	1 564.4	2 105.7	167.0	37.2	204.2	2 309.9	1 302.2	3 612.0	8.8	63.9
December	1 579.5	2 119.8	167.0	48.4	215.4	2 335.2	1 280.5	3 615.7	9.2	64.6
1997										
January	1 562.8	2 073.0	172.5	40.7	213.2	2 286.2	1 332.2	3 618.4	9.3	63.2
February	1 560.9	2 084.0	185.2	48.9	234.1	2 318.0	1 303.2	3 621.2	10.1	64.0
March	1 538.7	2 088.4	168.1	52.5	220.6	2 309.0	1 315.0	3 624.0	9.6	63.7
April	1 548.1	2 100.6	160.2	49.7	209.9	2 310.5	1 317.4	3 627.9	9.1	63.7
May	1 544.6	2 090.8	163.8	44.7	208.4	2 299.2	1 332.6	3 631.8	9.1	63.3
June	1 545.2	2 103.9	164.6	42.9	207.5	2 311.4	1 324.4	3 635.7	9.0	63.6
July	1 562.8	2 103.0	154.6	39.7	194.3	2 297.3	1 342.3	3 639.6	8.5	63.1
August	1 520.9	2 060.2	157.9	44.2	202.1	2 262.3	1 381.2	3 643.5	8.9	62.1
September	1 567.5	2 122.1	159.9	51.7	211.6	2 333.6	1 313.8	3 647.4	9.1	64.0
October	1 564.8	2 111.9	141.4	42.5	183.9	2 295.8	1 355.5	3 651.3	8.0	62.9

4

EMPLOYED PERSONS, By Industry

	May 1996	Aug 1996	Nov 1996	Feb 1997	May 1997	Aug 1997
Industry division	'000	'000	'000	'000	'000	'000
MALES						
Agriculture, forestry and fishing	69.0	65.8	71.1	79.0	70.2	58.7
Mining	*3.2	*3.2	4.6	*3.3	*3.0	*2.5
Manufacturing	249.7	261.5	262.6	255.3	253.0	249.8
Electricity, gas and water supply	13.3	11.4	11.2	10.4	12.4	13.4
Construction	123.1	119.3	118.0	106.7	104.9	110.9
Wholesale trade	94.1	93.6	86.9	84.9	92.4	84.9
Retail trade	151.7	152.1	159.7	158.2	157.5	150.6
Accommodation, cafes and restaurants	43.2	34.9	30.7	32.0	35.2	37.0
Transport and storage	76.6	64.5	66.2	73.9	78.4	74.8
Communication services	33.0	35.0	32.0	25.8	25.2	24.5
Finance and insurance	34.9	53.1	36.8	36.2	43.3	42.8
Property and business services	119.4	116.4	115.4	117.8	121.3	130.8
Government administration and defence	31.7	40.5	42.1	39.0	33.4	29.2
Education	46.6	47.3	52.4	47.8	47.6	48.4
Health and community services	42.0	44.1	45.8	38.5	35.6	37.5
Cultural and recreational services	21.7	24.2	20.3	26.5	21.5	25.8
Personal and other services	34.6	35.1	36.8	45.6	48.4	47.0
Total	1 187.9	1 182.2	1 192.4	1 180.9	1 183.3	1 168.7
FEMALES						
Agriculture, forestry and fishing	29.0	29.0	33.7	34.1	35.2	28.0
Mining	*1.0	*0.5	*0.5	*0.5	*0.0	*0.0
Manufacturing	110.6	103.0	99.8	97.5	95.7	93.7
Electricity, gas and water supply	*2.5	*2.3	*2.1	*2.9	*2.1	*1.8
Construction	15.2	15.5	16.3	14.6	14.1	15.0
Wholesale trade	39.0	37.5	39.6	38.5	41.4	38.1
Retail trade	155.5	150.1	166.9	156.3	151.3	150.0
Accommodation, cafes and restaurants	48.3	45.7	46.4	45.6	49.9	49.0
Transport and storage	21.3	18.1	20.8	25.1	23.9	18.1
Communication services	18.9	18.2	18.2	17.4	14.0	16.8
Finance and insurance	45.5	45.0	40.5	44.6	49.8	47.8
Property and business services	88.7	96.0	101.3	91.4	94.6	107.6
Government administration and defence	39.7	38.9	40.7	44.3	41.7	39.3
Education	88.2	90.6	89.4	84.7	89.2	90.7
Health and community services	141.6	143.4	141.9	147.0	145.1	144.7
Cultural and recreational services	21.0	24.8	20.3	23.2	21.9	19.4
Personal and other services	38.4	34.5	35.0	35.4	39.6	31.4
Total	904.3	893.2	913.3	903.0	907.5	891.5
PERSONS						
Agriculture, forestry and fishing	98.0	94.9	104.7	113.1	103.4	86.8
Mining	*4.3	*3.7	5.1	*3.8	*3.0	*2.5
Manufacturing	360.2	364.5	362.4	352.7	348.7	343.5
Electricity, gas and water supply	15.8	13.7	13.3	13.3	14.5	15.2
Construction	138.2	134.9	134.2	121.4	119.0	125.9
Wholesale trade	133.1	131.1	126.5	123.4	133.8	123.1
Retail trade	307.2	302.2	326.5	314.5	308.8	300.5
Accommodation, cafes and restaurants	91.5	80.6	77.1	77.6	85.1	86.0
Transport and storage	97.9	82.6	86.9	99.0	102.3	92.9
Communication services	52.0	53.2	50.3	43.2	39.1	41.3
Finance and insurance	80.4	78.1	77.2	80.8	93.1	90.6
Property and business services	208.1	212.4	216.7	209.1	215.9	238.5
Government administration and defence	71.4	79.5	82.8	83.3	75.1	68.5
Education	134.8	137.9	141.8	132.5	136.8	139.0
Health and community services	183.6	187.5	187.6	185.5	180.7	182.2
Cultural and recreational services	42.7	49.0	40.6	49.7	43.4	45.2
Personal and other services	73.0	69.5	71.8	81.0	88.0	78.4
Total	2 092.3	2 075.4	2 105.7	2 084.0	2 090.8	2 060.2

5

JOB VACANCIES

Month	INDUSTRY.....			SECTOR.....		Job vacancy rate %
	Vacancies all persons	Manu- facturing	Other	Public	Private	
	'000	'000	'000	'000	'000	
1996						
August	13.6	*2.0	11.6	1.7	11.9	0.83
November	12.8	2.0	10.8	1.9	10.9	0.75
1997						
February	12.8	*3.3	9.5	1.7	*11.1	0.75
May	11.5	*2.1	9.4	1.9	9.6	0.66
August	17.4	1.5	15.8	2.4	*14.9	0.97

6

INDUSTRIAL DISPUTES CAUSING STOPPAGE OF WORK

Period	NUMBER OF DISPUTES.....		EMPLOYEES INVOLVED ('000)		WORKING DAYS LOST ('000).....				
	Beginning in period	Total	Beginning in period	Total	Manu- facturing	Con- struction	Education, health, community services	Other industries	Total
1996									
June	n.p.	n.p.	—	25.0	—	25.0	—	—	25.0
July	5	6	33.8	46.8	5.5	23.0	8.9	6.7	44.1
August	6	8	7.8	8.9	41.7	—	2.4	0.6	44.7
September	10	11	6.1	6.5	6.3	5.8	0.1	—	12.2
October	11	13	3.0	3.4	4.3	1.2	0.5	0.1	6.0
November	9	12	15.3	15.4	1.9	—	10.2	1.6	13.7
December	9	11	1.6	5.5	1.0	0.4	1.9	0.6	3.9
1997									
January	3	5	0.9	1.4	—	1.1	—	0.1	1.1
February	6	7	9.9	10.3	—	3.0	7.7	—	10.7
March	8	8	8.8	8.8	0.5	2.3	—	5.3	8.1
April	11	12	4.7	5.1	9.2	1.5	—	0.5	11.2
May	16	19	7.6	9.8	11.6	0.6	0.4	3.9	16.5
June	7	13	2.0	5.1	3.5	0.2	1.2	2.5	7.4
July r	11	14	7.5	7.8	0.7	0.5	—	7.2	8.4
August	10	13	1.9	3.9	0.2	0.9	0.3	4.0	5.4

7

AVERAGE WEEKLY EARNINGS OF EMPLOYEES

Reference period	MALES.....			FEMALES.....			PERSONS.....		
	Full-time adult ordinary time earnings	Full-time adult total earnings	All males total earnings	Full-time adult ordinary time earnings	Full-time adult total earnings	All females total earnings	Full-time adult ordinary time earnings	Full-time adult total earnings	All employees total earnings
	\$	\$	\$	\$	\$	\$	\$	\$	\$
1996									
May	702.90	764.30	673.20	594.20	607.30	441.90	666.50	711.70	570.00
August	697.60	756.00	662.30	588.00	601.70	432.30	659.70	702.60	557.80
November	720.30	791.80	686.50	607.10	625.80	443.80	681.20	734.50	577.50
1997									
February	726.60	782.50	687.70	611.90	625.90	462.40	687.70	729.40	590.00
May	736.90	789.10	676.20	618.50	636.70	453.90	693.90	733.80	572.70
August	754.20	812.70	695.20	625.80	643.40	460.40	708.10	751.90	587.20

8

CONSUMER PRICE INDEX—Melbourne

MELBOURNE.....

Period	Food	Clothing	Housing	Household equipment and operation	Transport- ation	Tobacco and alcohol	Health and personal care	Recreation and education	All groups	Weighted average of eight capital cities —
										All groups
1994-95	110.1	107.4	97.5	111.1	118.8	137.3	142.4	116.7	114.1	113.9
1995-96	114.1	108.0	101.4	113.0	122.6	154.2	148.7	120.3	118.4	118.7
1996-97	118.6	108.4	95.0	114.7	124.0	158.5	157.1	123.3	119.9	120.3
1996										
September qtr	117.5	108.5	99.6	114.2	123.1	158.3	152.0	121.1	119.6	120.1
December qtr	118.4	108.4	96.7	114.9	124.1	158.0	155.3	122.0	119.9	120.3
1997										
March qtr	118.8	108.1	93.5	114.6	125.1	158.4	158.4	125.2	120.1	120.5
June qtr	119.6	108.4	90.1	115.0	123.8	159.4	162.7	124.8	119.9	120.2
September qtr	119.8	108.5	88.7	114.6	124.6	158.6	157.3	126.0	119.5	119.7

Base of each group: year 1989-90=100.0.

9

PRICE INDEX OF MATERIALS USED IN BUILDING—Melbourne

1997.....

Group	1994-95	1995-96	1996-97	Mar qtr	Jun qtr	Sept qtr	Weighted average of six state capital cities —
							Sept qtr 1997
House building							
All groups	115.9	115.4	115.3	115.1	115.8	116.1	117.3
Other than house building							
Structural timber	123.0	116.1	110.1	111.1	112.8	114.4	119.6
Clay bricks	112.3	112.1	113.1	113.7	114.6	116.1	112.7
Ready mixed concrete	124.2	118.6	111.5	111.6	112.0	111.2	107.5
Precast concrete products	104.8	108.1	110.3	110.8	111.8	111.8	119.3
Steel decking and cladding	106.5	109.9	109.2	111.3	111.3	110.4	115.4
Structural steel	95.3	100.9	104.2	104.5	105.1	105.1	112.9
Reinforcing steel bar, mesh, etc.	101.8	102.7	100.7	100.8	100.6	100.6	113.2
Aluminium windows	98.8	100.8	100.6	100.6	100.5	100.4	108.5
Fabricated steel products	110.7	113.1	116.7	117.9	119.3	119.3	115.8
Builders' hardware	113.7	114.5	116.5	117.0	117.8	118.6	118.7
Sand and aggregate	118.5	114.6	115.9	117.6	116.8	116.4	121.0
Carpet	98.5	101.6	101.6	101.6	102.9	102.9	103.2
Paint and other coatings	131.2	141.2	145.8	146.9	142.3	143.5	135.3
Non-ferrous pipes and fittings	100.8	112.2	111.5	111.5	112.6	113.8	134.5
All groups excluding electrical materials and mechanical services	108.5	109.7	110.0	110.2	110.7	110.6	113.9
All electrical materials	113.5	119.4	112.0	112.5	110.8	110.4	116.3
All mechanical services	108.9	114.1	114.9	114.6	114.7	114.8	114.9
All plumbing materials	112.6	118.9	120.1	119.7	120.9	121.6	128.5
All groups	108.9	111.1	110.9	111.1	111.3	111.2	114.0

Base of each index: year 1989-90=100.0.

10

LIVESTOCK SLAUGHTERINGS

	Cattle	Calves	Sheep	Lambs	Pigs	Chickens
Period	'000	'000	'000	'000	'000	'000
1993-94	1 393.9	583.4	3 975.9	5 600.8	1 188.5	85 797.9
1994-95	1 445.6	641.3	3 202.6	6 263.8	1 196.6	79 799.4
1995-96	1 523.6	589.8	2 488.0	5 897.7	1 142.1	85 410.9
1996						
August	121.7	182.1	182.2	439.4	91.7	7 155.9
September	118.0	131.0	182.9	468.0	91.3	7 308.5
October	146.6	70.9	251.8	551.1	102.8	8 282.4
November	131.7	19.4	251.0	546.8	94.3	6 957.6
December	138.4	8.7	274.8	528.3	103.0	7 780.8
1997						
January	159.3	7.9	324.5	533.6	92.9	7 661.6
February	148.8	6.6	304.8	460.0	96.8	6 863.8
March	131.2	15.9	234.3	466.0	90.2	6 520.7
April	165.6	42.4	261.1	559.2	111.1	7 244.5
May	155.2	55.9	225.4	518.7	113.4	6 867.5
June	140.1	75.5	174.5	475.4	105.2	6 692.3
July	148.0	101.5	188.8	524.6	118.8	8 263.5
August	141.7	138.0	202.3	505.4	104.7	7 152.4
September	129.4	170.6	226.8	532.9	107.9	7 546.2
October	141.2	98.3	280.7	554.8	107.6	7 914.1

11

MEAT PRODUCTION

MEAT (CARCASS WEIGHT).....

	Beef	Veal	Mutton	Lamb	Pigmeat	Dressed weight of chickens
Period	tonnes	tonnes	tonnes	tonnes	tonnes	tonnes
1993-94	315 279	13 466	85 010	101 386	78 488	123 529
1994-95	320 510	14 320	63 608	110 138	84 411	110 971
1995-96	348 649	12 009	50 910	110 172	83 052	127 736
1996						
August	27 220	3 589	3 693	7 990	6 594	11 366
September	26 388	2 643	3 730	8 468	6 624	11 122
October	33 045	1 433	5 217	10 159	7 416	12 457
November	29 544	431	5 067	10 085	6 671	10 453
December	31 543	226	5 610	9 866	7 365	11 780
1997						
January	35 911	218	6 485	10 024	6 607	11 173
February	33 270	174	5 915	8 720	6 835	11 030
March	28 955	363	4 469	8 804	6 312	9 188
April	36 387	895	4 990	10 656	7 972	10 256
May	33 595	1 106	4 301	9 841	8 236	10 367
June	30 242	1 461	3 459	9 041	8 595	9 999
July	31 437	2 002	3 676	9 804	8 593	13 039
August	30 122	2 751	3 887	9 487	7 622	10 842
September	28 191	3 407	4 440	9 911	7 926	11 910
October	30 641	1 963	5 501	10 260	7 978	12 726

Period	NEW DWELLING UNITS(a).....						NON-RESIDENTIAL BUILDING(b).....				
	Private sector.....		Public sector.....		Total(c).....		Conversions, etc.(d)	Alterations and additions to residential buildings	Private sector	Total	Total all building
	no.	\$m	no.	\$m	no.	\$m					
MELBOURNE STATISTICAL DIVISION											
1994-95	20 916	2 113.1	888	69.8	21 804	2 182.9	1 330	571.9	1 072.3	1 655.8	4 410.6
1995-96	15 676	1 624.3	1 068	86.5	16 744	1 710.8	617	467.2	1 352.5	1 934.5	4 112.5
1996-97 r	19 648	2 183.1	447	35.8	20 095	2 218.9	1 189	592.3	1 527.1	2 303.0	5 114.1
1996											
July	1 540	173.5	128	8.4	1 668	181.9	19	41.8	87.2	105.1	328.9
August	1 908	215.4	52	3.6	1 960	219.0	47	46.1	118.4	163.2	428.2
September	1 275	135.1	57	3.0	1 332	138.1	30	42.0	117.8	151.5	331.6
October	1 683	172.3	31	2.9	1 714	175.2	116	53.3	132.0	175.1	403.6
November	1 297	145.8	21	1.1	1 318	146.9	40	40.2	130.1	242.8	430.0
December	1 270	139.4	17	1.8	1 287	141.3	208	39.0	142.8	162.1	342.4
1997											
January r	1 561	162.2	37	6.0	1 598	168.2	24	39.1	168.7	202.1	409.5
February r	1 736	188.4	9	0.6	1 745	189.0	223	65.0	140.2	272.0	525.9
March r	1 848	195.1	12	1.2	1 860	196.3	36	50.7	150.7	184.1	431.1
April r	1 823	199.4	56	5.8	1 879	205.2	76	51.8	129.6	156.8	413.9
May r	1 963	241.9	23	1.2	1 986	243.2	70	49.0	106.4	136.6	428.8
June r	1 744	214.5	4	0.2	1 748	214.6	300	74.2	103.0	351.4	640.2
July r	1 998	216.9	38	1.9	2 036	218.9	25	51.1	132.1	176.2	446.2
August r	2 468	253.7	78	7.4	2 546	261.1	55	54.2	122.8	142.0	457.3
September	2 103	232.9	51	3.5	2 154	236.3	4	60.5	169.6	187.8	484.6
TOTAL VICTORIA											
1994-95	28 509	2 772.2	1 409	101.8	29 918	2 874.0	1 347	685.1	1 274.7	1 975.2	5 534.3
1995-96	21 643	2 171.1	1 401	108.7	23 044	2 279.7	663	590.1	1 721.6	2 452.4	5 322.3
1996-97 r	26 014	2 793.3	596	46.7	26 610	2 839.9	1 240	728.5	1 879.7	2 839.8	6 408.2
1996											
July	2 044	220.0	143	9.7	2 187	229.8	22	52.1	109.3	135.3	417.1
August	2 403	262.1	66	4.6	2 469	266.7	53	54.7	140.5	200.1	521.4
September	1 780	183.8	71	4.0	1 851	187.9	43	53.3	140.3	182.2	423.3
October	2 272	226.6	41	3.5	2 313	230.2	120	66.3	153.5	205.5	502.0
November	1 832	196.9	46	2.8	1 878	199.7	43	52.1	157.7	286.5	538.3
December	1 763	186.9	26	2.8	1 789	189.7	216	49.4	177.7	221.6	460.8
1997											
January r	2 039	209.6	49	6.9	2 088	216.4	25	50.1	188.9	226.6	493.1
February r	2 274	239.7	17	1.1	2 291	240.8	225	76.8	173.1	359.4	677.0
March r	2 407	249.8	12	1.2	2 419	251.0	37	63.1	180.8	225.1	539.2
April r	2 380	254.5	77	7.3	2 457	261.8	80	63.5	202.0	237.0	562.3
May r	2 565	298.9	37	2.2	2 602	301.1	74	62.5	135.6	178.3	541.9
June r	2 255	264.5	11	0.6	2 266	265.0	302	84.6	120.3	382.1	731.8
July r	2 563	275.5	42	2.3	2 605	277.8	27	62.9	161.8	227.9	568.6
August r	3 084	316.0	79	7.7	3 163	323.7	57	65.7	159.5	184.5	573.9
September	2 750	299.5	107	6.8	2 857	306.3	7	75.6	205.0	236.7	618.6

(a) Valued at \$10,000 and over.

(b) Valued at \$50,000 and over.

(c) Excludes dwelling units created as a result of conversions of buildings or construction of non-residential buildings.

(d) Dwelling units created as a result of conversions of buildings or construction of non-residential buildings.

	NEW HOUSES.....				NEW OTHER RESIDENTIAL BUILDINGS....			
	<i>Approved</i>	<i>Commenced</i>	<i>Under construction</i>	<i>Completed</i>	<i>Approved</i>	<i>Commenced</i>	<i>Under construction</i>	<i>Completed</i>
1994-95	25 885	25 846	10 668	27 380	4 033	3 612	2 765	2 892
1995-96	18 889	19 399	8 066	21 883	4 155	4 276	3 906	3 086
1996-97 p	19 990	18 576	8 936	17 553	6 808	5 946	4 075	5 716
1996								
June qtr	4 438	4 102	8 066	4 394	1 385	1 427	3 906	629
September qtr	4 631	4 453	8 623	3 848	1 876	1 722	4 111	1 480
December qtr	4 456	4 139	7 624	5 081	1 524	1 238	4 046	1 294
1997								
March qtr	5 032	4 597	8 176	3 997	1 875	1 560	4 046	1 553
June qtr p	5 871	5 387	8 936	4 627	1 533	1 426	4 075	1 389

Period	RESIDENTIAL BUILDINGS.....		NON-RESIDENTIAL BUILDINGS.....							Total
	New	Alterations and additions	Shops	Factories	Offices	Education	Health	Other		
									\$m	
COMMENCED										
1994-95	2 907.7	678.6	323.4	211.4	384.2	293.3	140.8	583.8	5 523.2	
1995-96	2 486.2	679.7	444.3	249.2	393.5	330.0	108.4	953.5	5 644.8	
1996-97 p	2 661.7	759.1	339.0	341.2	505.8	410.3	302.0	909.7	6 228.8	
1996										
June qtr	598.8	206.8	110.0	67.3	84.1	96.2	35.2	144.8	1 343.1	
September qtr	648.1	152.8	90.4	95.9	179.1	70.7	101.9	129.9	1 468.8	
December qtr	587.6	184.3	72.3	80.4	111.1	66.2	49.8	275.6	1 427.3	
1997										
March qtr	666.8	188.9	88.3	93.2	114.0	59.4	48.5	228.4	1 487.5	
June qtr p	759.2	233.1	87.9	71.7	101.5	214.1	101.9	275.9	1 845.2	
UNDER CONSTRUCTION AT END OF PERIOD										
1994-95	1 450.8	354.3	480.6	142.9	241.9	217.3	251.0	1 092.6	4 231.4	
1995-96	1 472.5	339.4	235.5	141.4	139.2	248.1	123.9	1 390.9	4 091.0	
1996-97 p	1 558.9	359.4	279.7	214.0	238.5	311.4	244.9	1 658.1	4 865.0	
1996										
June qtr	1 472.5	339.4	235.5	141.4	139.2	248.1	123.9	1 390.9	4 091.0	
September qtr	1 513.8	297.3	275.5	199.4	199.4	262.2	146.2	1 426.4	4 320.3	
December qtr	1 402.4	284.5	249.8	183.6	201.8	224.3	157.9	1 594.5	4 298.8	
1997										
March qtr	1 456.0	309.3	237.7	227.1	228.6	188.1	172.5	1 801.3	4 620.4	
June qtr p	1 558.9	359.4	279.7	214.0	238.5	311.4	244.9	1 658.1	4 865.0	
COMPLETED										
1994-95	2 882.5	709.8	313.6	253.1	290.7	228.8	387.3	521.5	5 587.3	
1995-96	2 489.6	689.0	715.1	249.9	514.1	302.2	234.7	844.4	6 038.9	
1996-97 p	2 611.7	765.9	360.5	294.2	396.1	340.5	184.4	1 096.3	6 049.6	
1996										
June qtr	521.4	147.7	217.6	60.0	98.1	72.9	33.9	392.8	1 544.6	
September qtr	606.0	204.1	85.6	41.5	119.6	55.7	79.2	175.6	1 367.4	
December qtr	710.6	200.5	106.0	110.8	79.2	103.1	39.0	220.4	1 569.5	
1997										
March qtr	616.3	168.6	121.2	56.9	100.5	88.1	34.8	271.0	1 457.4	
June qtr p	678.8	192.7	47.6	85.1	96.8	93.5	31.3	429.5	1 655.2	

	Budget estimate 1996-97	Actual 5 months to 30.11.1996	Actual 5 months to 30.11.1995
	\$m	\$m	\$m
Departmental outlays			
Education	3 738.2	1 606.9	1 465.6
Human services	5 221.3	1 969.7	1 761.2
Infrastructure	1 655.4	664.7	726.7
Justice	1 477.7	632.0	502.3
Natural resources and environment	459.6	203.5	151.8
Parliament	71.5	21.8	19.0
Premier and cabinet	290.1	102.3	106.8
State development	317.9	76.4	111.2
Treasurer and finance	1 271.7	-664.8	1 091.3
Commonwealth grants on-passed	852.1	428.0	409.2
<i>Total</i>	15 355.5	5 040.5	6 345.1
<i>less</i>			
Superannuation contributions	—	—	94.6
Capital charge received	262.1	24.2	—
Payroll tax paid by departments	254.9	103.9	99.5
<i>Total departmental outlays</i>	14 838.5	4 912.4	6 151.0
Current outlays	14 459.1	5 945.9	5 684.6
Capital outlays	379.5	-1 033.6	466.4
Revenue and grants received			
Revenue			
Taxes, fees and fines			
Payroll tax	2 123.9	882.6	822.6
Stamp duty on financial and capital transactions	1 015.2	540.6	366.8
State deficit levy on rateable properties	0.5	1.0	5.0
Financial institutions transaction taxes	582.5	249.7	239.4
Franchise fees	1 471.7	561.2	454.9
Motor vehicle taxes	821.3	363.0	351.7
Land taxes	407.0	24.0	23.7
Gambling taxes	1 151.7	471.3	416.6
Public authority contribution	317.5	170.4	181.3
Taxes on insurance	334.5	146.8	143.1
Other taxes, fees and fines	205.2	104.9	84.0
<i>Total taxes, fees and fines</i>	8 431.0	3 515.6	3 089.1
Other revenue			
Interest received	106.4	24.7	11.5
Rent and royalties	57.3	11.1	17.7
Income from public trading and financial enterprises	1 273.0	780.1	512.0
Other state revenue	48.5	39.0	33.9
<i>Total other revenue</i>	1 485.2	854.8	575.1
Grants			
Grants received from Commonwealth	6 239.6	2 550.3	2 399.3
Commonwealth grants for on-passing	852.1	430.8	410.0
<i>Total grants</i>	7 091.7	2 981.1	2 809.3
<i>Total revenue and grants received</i>	17 007.9	7 351.5	6 473.5
Financing transactions			
Net advances from Commonwealth	-34.8	-2.8	-214.7
Other net borrowing	-2 023.3	-2 843.2	-1 627.6
Other, including changes in cash balances and investments	-111.2	406.8	1 519.6
<i>Total financing transactions</i>	-2 169.3	-2 439.2	-322.7

(a) This monthly statement of budget sector transactions (Neimeyer Statement) is presented in *Government Finance Statistics* format. No monthly figures beyond November 1996 are currently available.

Source: Treasurer of Victoria.

16

PRIVATE NEW CAPITAL EXPENDITURE, By Selected Industries and Type of Asset

Period	SELECTED INDUSTRIES.....				TYPE OF ASSET.....	
	Mining	Manu- facturing	Other selected industries	Total	New buildings and structures	Equipment, plant and machinery
	\$m	\$m	\$m	\$m	\$m	\$m
ACTUAL						
1993-94	441	2 657	3 933	7 031	1 485	5 546
1994-95	603	3 034	3 896	7 533	1 535	5 998
1995-96	590	3 544	6 160	10 294	3 126	7 168
1996						
June qtr	109	925	1 967	3 001	953	2 048
September qtr	125	808	1 639	2 573	789	1 784
December qtr	301	987	1 862	3 150	1 039	2 110
1997						
March qtr	162	772	1 613	2 547	789	1 758
June qtr	170	879	2 143	3 193	743	2 450
EXPECTED						
1996-97	952	3 985	6 522	11 460	3 524	7 936
1997-98	844	2 698	5 103	8 644	2 876	5 769

17

COMMERCIAL FINANCE COMMITMENTS

Period	FIXED LOAN FACILITIES.....						TYPE OF LENDER			
	Construction	Purchase of real property	Purchase of plant and equipment	Wholesale	Other	Total	Revolving credit facilities	Total commit- ments	Banks	All other lenders
	\$m	\$m	\$m	\$m	\$m	\$m	\$m	\$m	\$m	\$m
1996										
July	97.9	264.5	183.4	107.7	648.4	1 301.9	2 175.6	3 477.6	2 868.7	608.9
August	80.5	287.6	258.4	64.9	640.8	1 332.4	1 386.5	2 718.9	2 375.6	343.2
September	75.1	248.3	190.0	69.0	896.0	1 478.5	1 300.6	2 779.1	2 384.9	394.1
October	146.3	290.8	185.7	97.8	353.3	1 074.0	1 593.6	2 667.6	2 046.4	621.2
November	76.4	290.8	176.0	78.0	525.7	1 147.1	1 913.0	3 060.1	2 105.2	954.9
December	82.8	293.8	172.5	69.1	705.7	1 324.0	1 546.0	2 870.0	2 078.9	791.1
1997										
January	54.7	284.2	131.8	69.3	450.7	990.7	2 538.2	3 528.9	1 688.3	1 840.6
February	77.4	310.8	140.1	74.6	316.8	919.6	1 711.3	2 630.9	2 159.6	471.3
March	92.8	369.0	183.2	84.8	707.3	1 437.2	1 113.6	2 550.8	2 203.7	347.1
April	76.8	355.2	166.4	79.3	443.5	1 121.3	2 092.8	3 214.1	2 826.2	387.9
May	78.7	738.2	154.5	90.2	863.5	1 925.1	2 425.8	4 350.9	3 738.8	612.1
June	75.4	408.9	172.8	120.2	824.8	1 602.2	2 232.2	3 834.4	2 929.6	904.8
July	134.1	439.1	177.7	150.4	1 162.2	2 063.5	2 470.0	4 533.5	3 757.0	776.5
August	98.8	411.9	166.0	86.6	692.8	1 456.1	2 193.8	3 649.9	2 827.0	822.9
September	153.7	500.3	177.8	120.8	583.9	1 536.6	2 481.3	4 017.9	3 545.9	472.0

Period	Original series.....		Seasonally adjusted		Trend estimates.....	
	Dwelling units	\$m	Dwelling units	\$m	Dwelling units	\$m
1996						
July	10 015	900	9 257	822	9 279	832
August	9 845	874	9 694	869	9 411	843
September	10 153	900	10 353	906	9 507	851
October	9 947	903	9 417	857	9 483	852
November	8 743	798	8 892	815	9 349	847
December	8 557	810	9 083	824	9 188	846
1997						
January	7 816	741	9 300	868	9 125	857
February	8 759	818	9 003	854	9 205	879
March	8 634	839	9 107	922	r9 367	908
April	10 637	1 031	9 956	961	r9 538	r937
May	10 302	1 018	9 831	967	r9 662	963
June	10 081	1 022	9 753	989	r9 759	r987
July	10 199	1 039	9 511	953	r9 840	r1011
August	9 890	1 031	9 925	1 077	r9 917	r1034
September	10 059	1 083	10 153	1 066	9 972	1 051

Month	Food	Department	Clothing and	Household	Recreational	Other	Hospitality	Total
	retailing	stores	soft good retailing	good retailing	good retailing	retailing	and services	
	\$m	\$m	\$m	\$m	\$m	\$m	\$m	\$m
1996								
August	1 029.9	199.7	137.6	327.8	134.3	221.5	290.9	2 341.5
September	966.8	186.2	136.4	297.9	128.5	210.7	296.0	2 222.5
October	1 061.6	203.9	163.2	341.1	150.2	245.2	311.4	2 476.5
November	1 063.5	250.8	154.3	351.3	159.7	261.0	316.0	2 556.6
December	1 185.9	442.4	218.4	446.1	246.7	363.9	363.3	3 266.6
1997								
January	1 108.7	197.4	153.2	347.3	144.8	220.6	321.1	2 493.1
February	1 009.1	171.9	118.2	320.1	132.2	220.5	284.9	2 256.9
March	1 084.0	214.3	143.1	319.9	142.2	229.8	326.0	2 459.1
April	1 053.7	212.6	173.4	325.2	147.0	242.5	310.7	2 465.2
May	1 104.6	241.0	169.8	327.6	141.1	254.6	304.8	2 543.5
June	1 028.5	200.4	147.1	333.1	134.8	235.7	288.4	2 367.9
July	1 069.4	226.3	164.2	331.4	139.6	254.6	305.0	2 490.5
August	1 069.6	198.2	148.1	336.7	144.1	268.8	307.6	2 473.0
September	1 047.4	226.6	154.5	325.1	151.6	r272.7	r304.8	r2482.6
October	1 124.7	232.6	168.7	372.2	162.6	271.5	328.4	2 660.7

Section	1996-97.....		4 MONTHS ENDING OCT 1997.....	
	Imports	Exports	Imports	Exports
	\$m	\$m	\$m	\$m
0 Food and live animals chiefly for food	1 002	3 674	375	1 096
1 Beverages and tobacco	103	124	49	55
2 Crude materials, inedible (except fuels)	536	1 739	205	590
3 Mineral fuels, lubricants, and related materials	1 025	887	281	288
4 Animal and vegetable oils, fats, and waxes	95	83	37	32
5 Chemicals and related products, n.e.c.	2 478	877	945	298
6 Manufactured goods classified chiefly by material	3 706	2 323	1 465	783
7 Machinery and transport equipment	10 956	3 394	4 079	1 053
8 Miscellaneous manufactured articles	4 351	1 993	1 788	373
9 Commodities and transactions of merchandise trade, n.e.c.	933	2 218	292	648
Total	25 185	16 312	9 516	5 216

Country	1995-96.....		1996-97.....		4 MONTHS ENDING OCT 1997.....	
	Imports	Exports	Imports	Exports	Imports	Exports
	\$m	\$m	\$m	\$m	\$m	\$m
Belgium-Luxembourg	253	74	242	66	85	16
Brazil	174	77	125	81	54	32
Canada	453	101	394	123	129	38
China	1 675	641	1 755	658	775	198
Fiji	60	215	119	236	55	84
Finland	239	9	169	8	67	3
France	536	143	711	162	178	62
Germany	1 994	264	r1 923	280	677	80
Hong Kong	241	821	267	812	131	334
India	234	139	231	239	106	65
Indonesia	378	367	513	428	175	135
Italy	807	249	832	320	290	130
Japan	3 429	1 952	3 097	1 527	1 326	545
Korea, Republic of	634	1 921	671	r2 098	261	544
Malaysia	458	737	508	669	221	197
Mexico	55	43	64	52	26	21
Netherlands	233	60	237	r40	84	19
New Zealand	1 207	1 598	1 247	r2 140	462	522
Pakistan	72	77	75	55	34	36
Papua New Guinea	128	237	232	269	73	77
Philippines	117	339	108	372	45	121
Saudi Arabia	225	194	226	168	42	55
Singapore	571	1 162	524	r893	161	314
South Africa	83	207	100	292	45	87
Sweden	591	r70	502	65	192	10
Switzerland	288	45	241	66	87	8
Taiwan	773	663	799	696	310	215
Thailand	322	513	335	412	131	121
United Kingdom	1 502	373	1 635	416	577	155
United States of America	5 839	788	5 945	958	2 166	410
Other and unknown	1 092	1 332	1 359	1 711	552	583
Total	24 663	r15 411	r25 186	r16 312	9 517	5 217

(a) The list of countries in this table reflects the volume of trade with Victoria.

Information about Victoria's trade with other countries is available on request.

Period	VICTORIA.....			AUSTRALIA.....		
	Imports	Exports	Excess of exports	Imports	Exports (incl. re-exports)	Excess of exports
	\$m	\$m	\$m	\$m	\$m	\$m
1994-95	23 967	13 008	10 959	74 619	67 052	-7 567
1995-96	24 663	15 410	-9 253	77 792	76 005	-1 787
1996-97 r	25 185	16 310	-8 875	78 970	78 931	-39
1996						
August	2 194	1 255	-939	6 756	6 400	356
September	2 062	1 273	-789	6 276	6 245	-31
October	2 462	1 382	-1 080	7 304	6 656	-648
November	2 101	1 264	-837	6 573	6 374	-199
December	2 049	1 340	-709	6 694	6 737	+43
1997						
January	1 985	1 146	-839	6 425	6 019	-406
February	1 941	1 349	-592	6 072	6 424	+352
March r	1 865	1 396	-469	5 985	6 632	+647
April r	2 165	1 347	-818	6 749	6 636	+119
May r	2 040	1 992	-48	6 448	7 628	+1 180
June r	2 076	1 327	-749	6 848	6 840	-8
July r	2 362	1 287	-1 075	7 420	7 094	-326
August r	2 265	1 187	-1 078	7 053	7 181	+128
September r	2 339	1 339	-1 000	7 328	7 181	-147
October	2 551	1 404	-1 147	7 878	7 591	287

Period	HOTELS, MOTELS, ETC. WITH FACILITIES				SHORT-TERM CARAVAN PARKS.....			
	Establishments	Capacity, guest rooms	Room occupancy rates	Takings from accommodation	Establishments	Capacity, sites and cabins	Site occupancy rates	Takings from accommodation
	no.	no.	%	\$'000	no.	no.	%	\$'000
MELBOURNE STATISTICAL DIVISION								
1996								
June qtr	243	14 644	68	105 834	53	5 724	47	1 510
September qtr	239	14 440	66	100 835	53	5 728	44	1 771
December qtr	241	14 509	71	114 046	52	5 877	51	2 262
1997								
March qtr	240	14 456	74	125 553	52	5 899	59	2 368
June qtr	240	14 953	67	111 910	52	5 878	46	1 618
TOTAL VICTORIA								
1996								
June qtr	1 021	30 007	54	142 716	439	54 060	39	12 016
September qtr	1 013	29 877	52	141 778	441	54 226	36	12 239
December qtr	1 013	29 918	56	152 611	441	54 390	41	17 402
1997								
March qtr	1 012	29 869	60	169 396	442	54 394	49	21 407
June qtr	1 012	30 325	53	148 700	440	54 056	39	12 340

LIST OF REFERENCES(a)

.....

Table

DEMOGRAPHY

- 1 *Australian Demographic Statistics* (Cat. no. 3101.0) (quarterly)
2 *Demography, Victoria* (Cat. no. 3311.2) (annual)

LABOUR

- 3 *Labour Force, Victoria* (Cat. no. 6202.2) (quarterly)
4 *Labour Force, Australia* (Cat. no. 6203.0) (monthly)
5 *Job Vacancies and Overtime, Australia* (Cat. no. 6354.0) (quarterly)
6 *Industrial Disputes, Australia* (Cat. no. 6321.0) (monthly)

WAGES AND PRICES

- 7 *Average Weekly Earnings, States and Australia* (Cat. no. 6302.0)
(quarterly)
8 *Consumer Price Index* (Cat. no. 6401.0) (quarterly)
9 *Price Index of Materials Used in Building Other Than House Building,
Six State Capital Cities* (Cat. no. 6407.0) (quarterly)
Price Index of Materials Used in House Building, Six State Capital Cities
(Cat. no. 6408.0) (quarterly)

MEAT PRODUCTION

- 10, 11 *Livestock Products, Australia* (Cat. no. 7215.0) (monthly)

BUILDING

- 12 *Building Approvals, Victoria* (Cat. no. 8731.2) (monthly)
13, 14 *Building Activity, Victoria* (Cat. no. 8752.2) (quarterly)

FINANCE

- 15 *Treasurer of Victoria—Statement of Budget Sector Transactions,
Victoria*
16 *State Estimates of Private New Capital Expenditure* (Cat. no. 5646.0)
(quarterly)
17, 18 *Housing Finance for Owner Occupation, Australia* (Cat. no. 5609.0)
(monthly)

RETAIL

- 19 *Retail Trade, Australia* (Cat. no. 8501.0) (monthly)

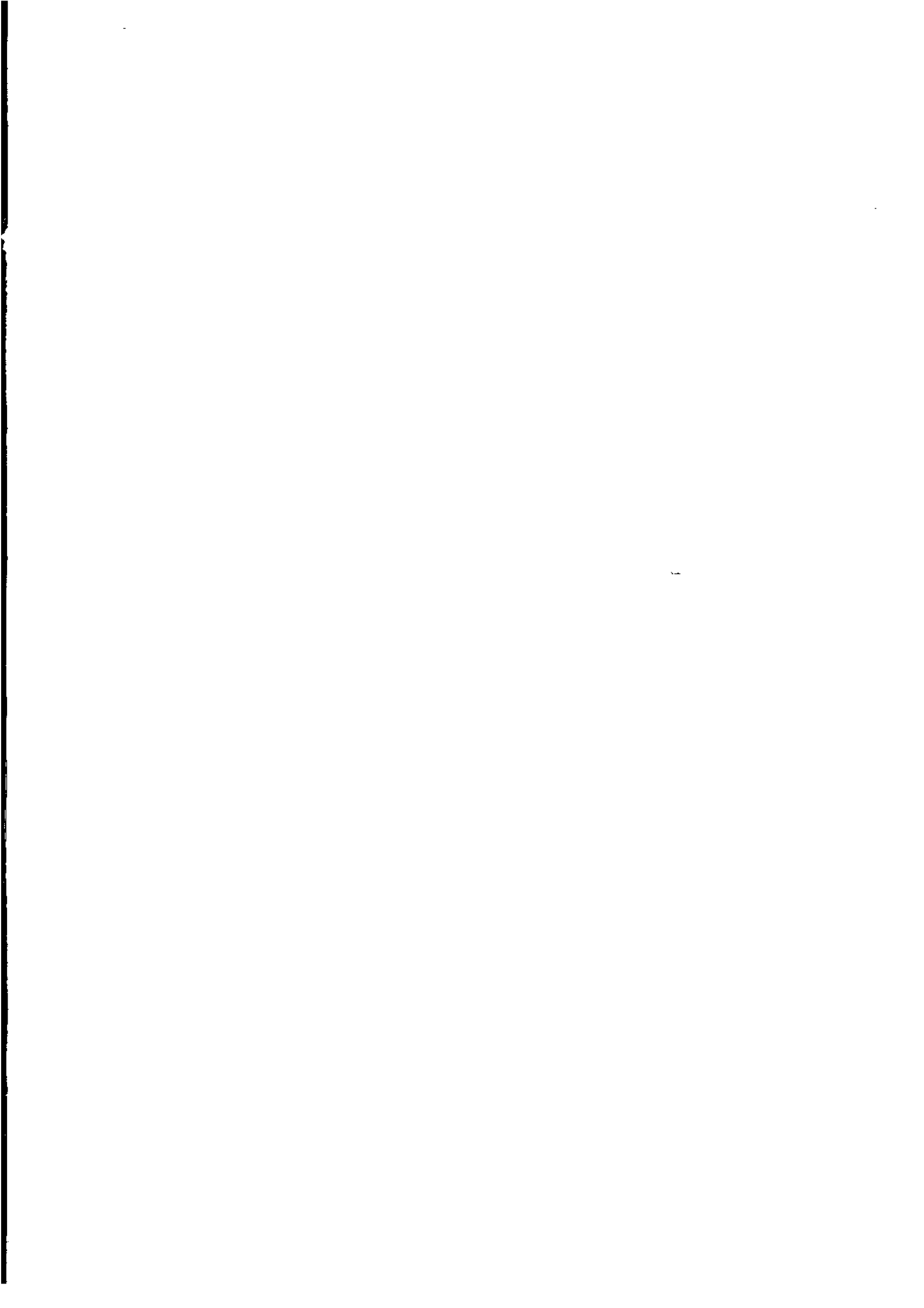
TRADE

- 20 *Foreign Trade Australia: Fasttraccs Database*
21 *Overseas Trade: Fasttraccs Database*
22 *Overseas Trade: Fasttraccs Database*

TOURISM

- 23 *Tourist Accommodation, Victoria* (Cat. no. 8635.2) (quarterly)

(a) As at November 1997. Publication names and catalogue numbers are subject to revision or change.



For more information . . .

The ABS publishes a wide range of statistics and other information on Australia's economic and social conditions. Details of what is available in various publications and other products can be found in the ABS Catalogue of Publications and Products available from all ABS Offices.

ABS Products and Services

Many standard products are available from ABS bookshops located in each State and Territory. In addition to these products, information tailored to the needs of clients can be obtained on a wide range of media by contacting your nearest ABS Office. The ABS also provides a Subscription Service for standard products and some tailored information services.

National Dial-a-Statistic Line

0055 86 400

Steadycom P/L: premium rate 25c/20 secs.

This number gives 24-hour access, 365 days a year, for a range of important economic statistics including the CPI.

Internet

<http://www.abs.gov.au>

A wide range of ABS information is available via the Internet, with basic statistics available for each State, Territory and Australia. We also have Key National Indicators, ABS product release details and other information of general interest.

Sales and Inquiries

client.services@abs.gov.au

National Mail Order Service	(02) 6252 5249
Subscription Service	1300 366323

	Information Inquiries	Bookshop Sales
CANBERRA	(02) 6252 6627	(02) 6207 0326
SYDNEY	(02) 9268 4611	(02) 9268 4620
MELBOURNE	(03) 9615 7755	(03) 9615 7755
BRISBANE	(07) 3222 6351	(07) 3222 6350
PERTH	(09) 360 5140	(09) 360 5307
ADELAIDE	(08) 8237 7100	(08) 8237 7582
HOBART	(03) 6222 5800	(03) 6222 5800
DARWIN	(08) 8943 2111	(08) 8943 2111



Client Services, ABS, PO Box 10, Belconnen ACT 2616

Produced by the Australian Government Publishing Service
© Commonwealth of Australia 1997

Recommended retail price: \$16.00



2130320011979

ISSN 0158-202X